

Promotion of land at Tortington, Arundel  
Representative Views

Dec 2020

DLA.1972.VA.RPT.02.V1

PLANNING SUBMISSION

on behalf of the Norfolk Estate

To be read as an Appendix to the LVIA - TO BE VIEWED AT A3

**DAVIESLANDSCAPE**  
ARCHITECTS

# Proposed development on land off Ford Road, Arundel

Representative Views

December 2020

## NOTICE

This document has been produced on behalf of Norfolk Estate by Davies Landscape Architects for the sole purpose of planning for the project below:

Document Title: Proposed development on land off Ford Road, Arundel - Representative Views

Document Reference: DLA.1972.VA.RPT.02.V1

This document may not be used by any person for the purpose other than which it is intended without the express written permission of DLA. Any liability arising out of use by a third party for a purpose not wholly connected with the above shall be of that party who shall indemnify DLA against all claims, costs, damages and losses arising out of such use.

## Document History

Rev	Purpose	Author	Checked	Reviewed	Authorised	Date
V1	Planning submission	NP/SH	SH	NP/SH	SH	25.11.20

## Revision Description Of Changes

Revision	Description Of Changes

## INTRODUCTION

### Purpose

This document should be read in conjunction with the Landscape and Visual Impact Assessment undertaken by Davies Landscape Architects (and submitted under separate cover) in accordance with the following guidelines:

- 'Guidelines for Landscape and Visual Impact Assessment' - Landscape Institute & the Institute of Environmental Management and Assessment, 2013 (Third edition); and
- The Landscape Institutes Landscape Institute 'Visual Representation of Development Proposals' Technical Guidance Note 06/19 17 September 2019.

The photographs included have been shown in a 60° Field of View and panorama format to give a full context of the view - these will be supplemented with a single 39.6°x 27° Field of View within the final document.

The potential for views and influencing factors has been recorded in a series of Representative and Illustrative Viewpoints (RVP's and IVP's). Representative Viewpoints (RVP's) have been taken to illustrate a typical view (or views) from a given area or group of receptors identified through the desk based assessment and field surveys.

Where it is not possible to obtain publicly available views, Illustrative Viewpoints (IVP's) have been included to help inform the decision process. These have been taken from within the Site towards private land and residences and to illustrate where specific factors or features influence the potential extent of view.

### Limitations

Due to the current COVID restrictions the RVP's have not been updated but are still considered to provide an accurate record.

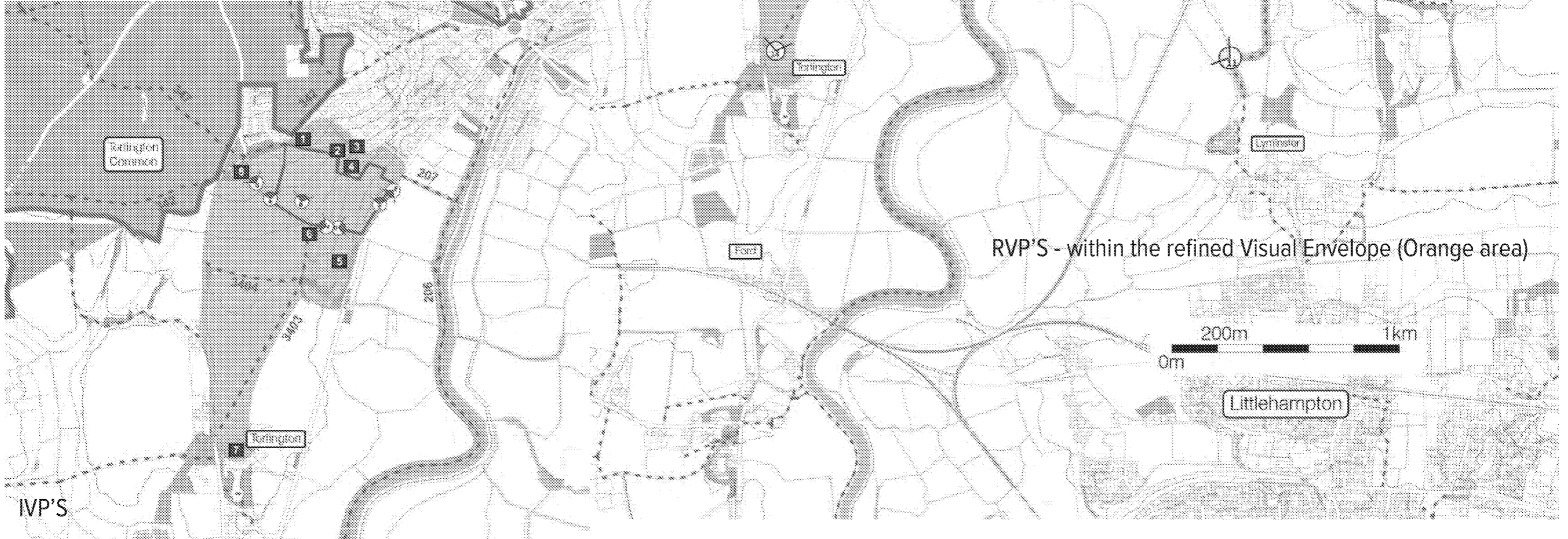
THE RVPS SHOULD BE VIEWED AT A3 AT A COMFORTABLE ARMS LENGTH. This provide the most accurate representation of how the view would be experienced on site.

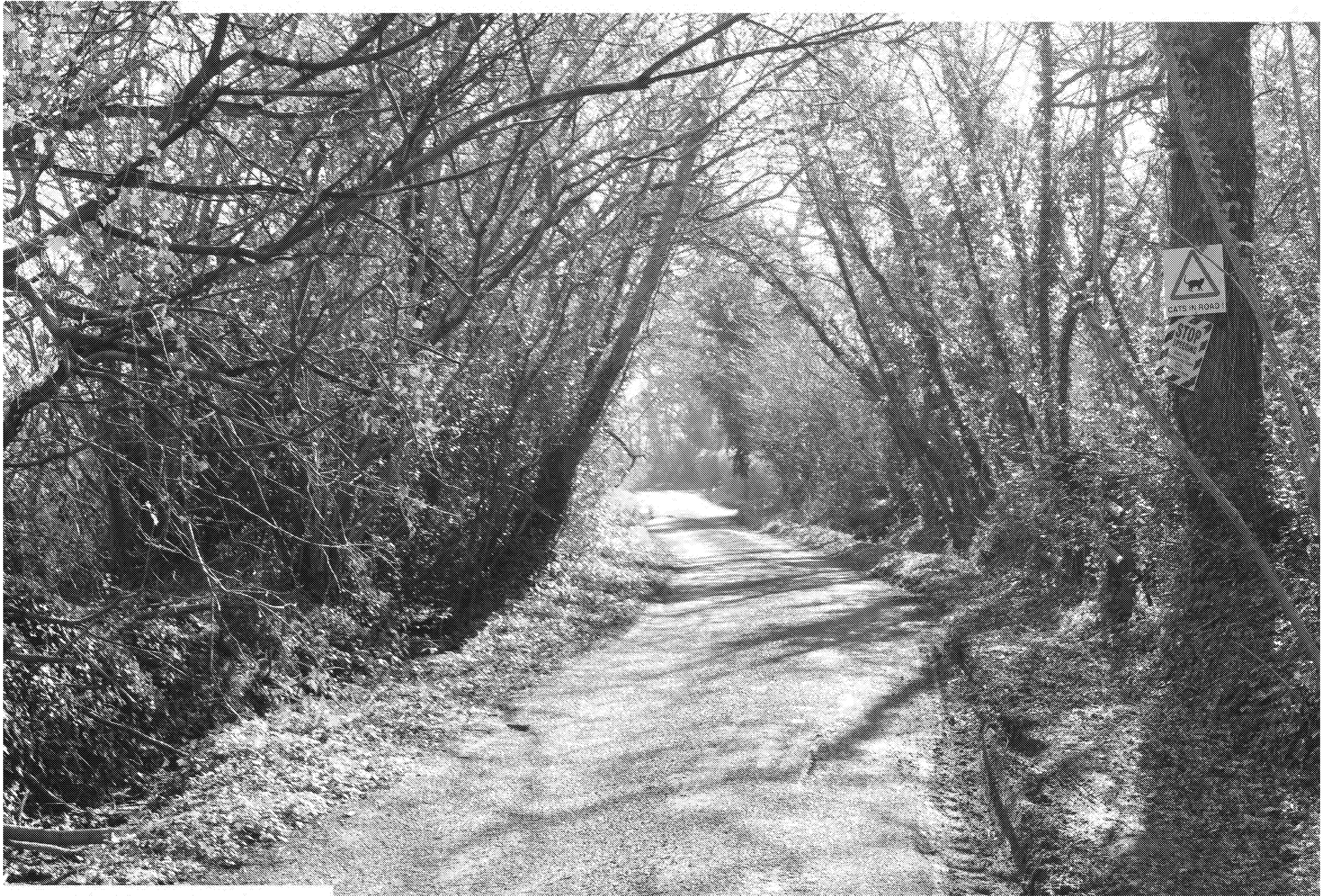
**DAVIESLANDSCAPE**

A R C H I T E C T S

Suite F1 & F2, Stroud House, Russell Street, Stroud,

Gloucestershire, GL5 3AN.





RVP 01: View towards Site from PRow 342 junction with Priory Lane- 39.6° x 27° Horizontal Field of View



**RVP 02:** - View along PRow 342 as it travels southwest from Dalloway Road - **39.6° x 27° Horizontal Field of View**



RVP 03:View along PRoW 342 as it continues northeast from Dalloway Road - 39.6° x 27° Horizontal Field of View



**RVP 04:** View towards northern boundary from High Ridge Close - 39.6° x 27° Horizontal Field of View



**RVP 05:** View towards northern boundary from southern extent of Stewards Rise- **39.6° x 27° Horizontal Field of View**



RVP 06:View towards Site from Allotment entrance - 39.6° x 27° Horizontal Field of View



**RVP 07:** View southwest from Monarch's Way PRow - Representative of extent of view from within National Park - **39.6° x 27° Horizontal Field of View**



**RVP 08:** View towards Site from Ford Road- **39.6° x 27°** Horizontal Field of View



**RVP 09:** View west towards site from PRow 206 along the River Arun- **39.6° x 27° Horizontal Field of View**